



www.timberlywoodturning.co.nz

TERRY SCOTT
 NZ Agent for
BURNMASTER®
 Also
Woodcut
 EDGLES LIMITED

See website for more
 Contact: timberly@xtra.co.nz for an info sheet or ph: (09) 297 7051
Remember, if I cannot break it, no-one can!

027 491 3868 Clive Wilson (Tutor)
 Issue No 27 - Friday 1st Sept 2017

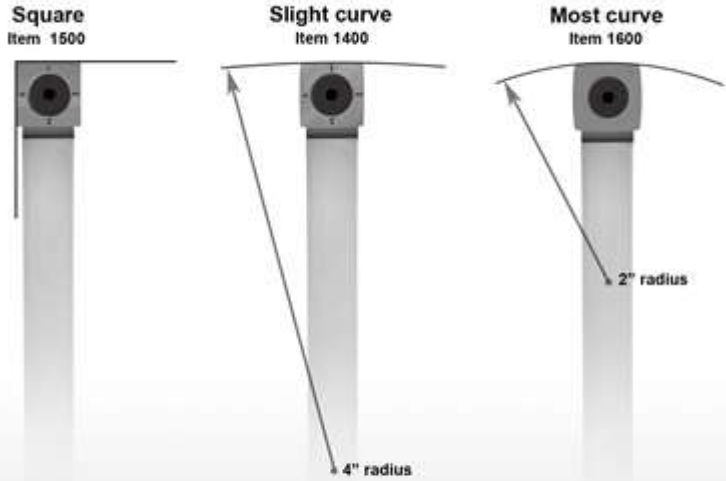
Please quote this code when shopping at
 Timberly Woodturning. **HC2017**

Terry Scott of Timberly Woodturning is offering our club a Super discount month – all of September – 25% off all Easy Wood tools.

Carbide Cutters

These carbide cutters have four sharp sides.

One tool - three cutter choices



Used for roughing and when you need a dead square inside corner.

This is the standard cutter supplied on all Ci1 tools and is used for roughing and inside work on larger bowls.

Used for finishing and inside bowls. Especially bowls under 8" diameter. Also great for pen making.
 *We recommend this cutter for just the last few passes.

Please note: For the Mini and Mid Size Rougher: Ci2-Square and Ci2-R2 **Genuine EWT Carbide Cutters** are available.
TUTOR's note: I use the mini size Easy tool fitted with R2 (2" radius) for my pen making. You are welcome to have a go with my EASY tools during your next turning project.



The next three pages contain details about the three different types of EASY tools. If you need further information have a chat with club members who are already using these EASY tools.

Easy Turning Tools by Easy Wood Tools



Easy Rougher - The Next Step in Woodturning



The Easy Rougher is a carbide cutter woodturning tool that addresses fatigue, safety, and efficiency like no other type of tool on the market. Designed to be kept flat on the tool rest and level to the floor, the Easy Rougher will effortlessly hog away massive amounts of material for any woodturning process without the need for sharpening. The tool design provides support directly beneath the cutting edge transferring the cutting pressure downward allowing the lathe to "take the pounding" that you would normally suffer through when using a conventional bowl gouge for roughing. No more 'white knuckling' a bowl gouge.

- Cuts left, right and straight in without changing approach angle
- Truly deeper cuts – up to 1" off the diameter in one pass with the Full Size Rougher.
- Requires very little physical strength or exertion
- Your feet and hips stay in nearly the same position for the blank roughing process.
- Very minimal handle bouncing on irregular shaped blanks
- Reduced kick-back or sucking into work piece
- Available Chip Deflector keeps most projectiles away from the face and neck
- No intimidating cutting angles to learn and remember
- No bevels to ride
- No fear of a dangerous catch



Easy Finisher - Yet Another Innovation in Woodturning

With another step forward in woodturning innovation, Easy Wood Tools now offers you a tool to take up where the Easy Rougher leaves off. The Easy Finisher has a round carbide cutter perfect for doing the inside work on smaller bowls and for larger coves on spindle work. Our carbide inserts are made in the USA and we are pleased to offer you a tool that is 100% "made in America."

Like the other Easy tools, the Easy Finishers are designed to be used with the tool rest set so that when the tool is held level the top of the cutter is on center. Then just keep it level to the floor and flat on the tool rest for all types of cuts... it does not get any easier than that. There are no complicated approach angles, or bevels to ride. The design of this tool allows the Easy Finisher to effortlessly cut from the center of a bowl out to the rim OR from the rim to the center! All without changing any angles whatsoever. You just stand in one spot and cut coming and going until you get to the shape you want.

The Easy Finisher utilizes the same carbide cutter technology as the Easy Rougher that reduces strain and fatigue, improves productivity, and virtually eliminates sharpening. It comes loaded with one round cutter and when it gets dull, you just rotate the cutter for a fresh cut. Please note: The round cutters are not interchangeable with the carbide cutters on the Easy Rougher tool bars.

When the cutter eventually gets dull, just loosen the retaining screw and rotate cutter about 1/4 of a turn, then re-tighten the screw.





Easy Detailer

The Easy Detailer tools really pick up where other tools leave off and provide another level of woodturning creativity as the unique diamond cutter shape fits in tight places where the cutters on the other tools will just not fit.

These tools were designed for the primary purpose of doing the small intricate work and cutting final details on your projects such as small coves and beads on both spindle and bowl work. They are also very handy for cutting chuck tenons and making inside reverse angle cuts for inside chucking bowls with dovetail jaws. You may find they work well for hogging your green wood projects too.

The Easy Detailers are engineered to cut going straight in employing just the nose of the tool.

The Easy Detailer tools are engineered with a reduced relief angle to the long cuttings edges making the long edges less aggressive when held in contact with the wood as the nose of the tool is cutting. In use, the long edge is intended to perform as a "control surface" and serve to be in contact with the wood just behind the cut; much like a bevel is being rubbed.

For safety reasons, avoid plunging the tool so deep into the work at once to the depth you would have both sides of the cutter in contact with the wood too greatly at the same time. This could cause too much force at once and lead to binding of the tool in the groove.

Each diamond-shaped Easy Detailer cutter is engineered to fit all size Detailer tools in our current product line. When the cutter eventually dulls, just loosen the retaining screw and rotate cutter, then re-tighten the screw.

Replacement carbide cutter number is engraved right on the tool bar. Available in four sizes - see purchase page for all products, sizes and accessories.

Please note that Terry Scott's offer of **25% discount** on all EASY tools expires on the last day of September 2017.

Club members are advised to try these tools before making a firm commitment to purchase.

PICTURE interpretation



*It has been often said that one of the most difficult woodturning tasks is to **replicate** objects making several items look exactly the same. A good example is the making of a set of sixteen chess pawns.*

*Another challenging turning task is to look at a 2-dimensional picture then re-create it in **three dimensions** on a lathe.*

Our three groups of new turners were presented with the latter challenge. [Picture interpretation to 3D] Each turner was given a picture of the pipe-smoking, scarf-bound, hat-wearing “snowman”.

After selecting their own wood the only instructions to the groups of inducting turners were “**RE-CREATE THAT!**”

Tutor’s note: The making of this object involved all the basic skills and tools our new turners had been introduced to over the past eight weeks. (Nah! Not a test!)

Check out the results.



JOHN



MICHAEL



GRAEME



GIDEON applied a set of evenly spaced rings to his natty pepper mill.



MURRAY produced an excellent model of a totara-post form



STEPHEN's lathe has been busy again.



ROBERT's English plane bowl has been air-brushed then sprayed with lacquer.



GIDEON, our irrepressible experimenter, turned these pens using the core of a pine cone.



Wednesday's new crew completed the paper-pots project. Well done fellas!



AARON has been busy with his new lathe in his home workshop. Potential galore!



MURRAY's long-term project was finally completed this week. An outstanding result here. Goodonya Murray.



JUSTIN, another new turner, looks happy in his work. A confident approach!

WRITE this DATE in your diaries. Reserve the day.

TERRY SCOTT of Timberly Woodturning will visit our club and demonstrate wood turning techniques.

SATURDAY 7th OCTOBER 2017

Demonstration at our club workshop.

Don't miss this event!

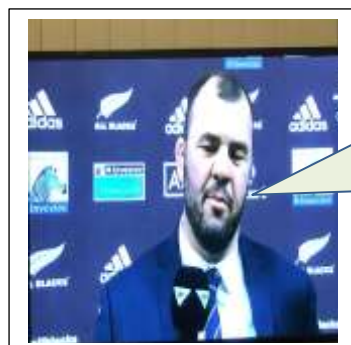


A place for everything and everything in its place!

DAVID MOLLEKIN had a one-man working bee on Tuesday.

Thanks heaps David

(He's a tidy Kiwi. We need to be a tidy Kiwi too!)



"All Blacks were lucky..... Ref didn't.....For crying out loud! Didja see that... Strewth mate! Aw.... c'mon that's offside ref."

**Auckland has a housing crisis
(and a rugby crisis too it seems)**

Well done Waikato Rugby team

Goodonya!